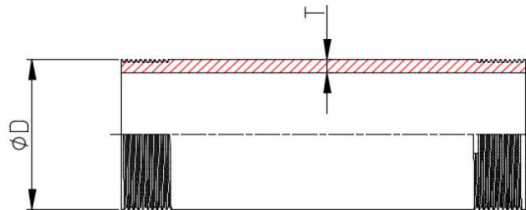


NU Stainless Steel Pipe

- * Standard: BS6362
- *Stainless Steel Grade: SS316L
- *Thread: ISO7-1 / BS21
- * Working Pressure : Max. 20 Bar

Model: SFF
External Thread SS pipe



DN		Dimensions (mm)				
DN	Inch	D			T	长度 (米)
		外径	最大值	最小值		
15	1/2"	21.3	21.8	21.0	2.6	5.80
20	3/4"	26.9	27.3	26.5	2.6	5.80
25	1"	33.7	34.2	33.3	3.2	5.80
32	1 1/4"	42.3	42.9	42.0	3.2	5.80
40	1 1/2"	48.3	48.8	47.9	3.2	5.80
50	2"	60.3	60.8	59.7	3.6	5.80
65	2 1/2"	76.1	76.6	75.3	3.6	5.80
80	3"	88.9	89.5	88.0	4.0	5.80
100	4"	114.3	115.0	113.1	4.5	5.80

NU Stainless Steel Pipe Fittings

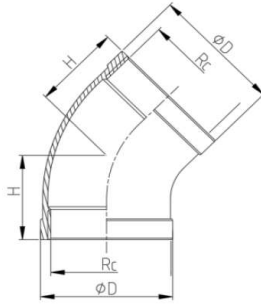
*Standard: ISO4144

*Stainless Steel Grade: SS316

*Threads: ISO7-1

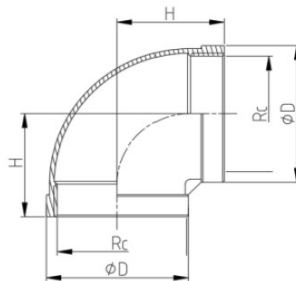
*Working Pressure: Max. 20 Bar

Model: Z45FF
45 Degree Elbow



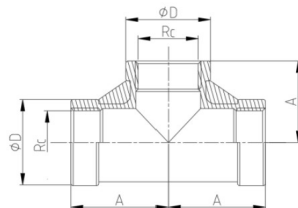
DN		Dimensions (mm)	
DN	R	D	H
8X8	1/4"	18	17
10X10	3/8"	21	19
15X15	1/2"	26.5	21
20X20	3/4"	32	25
25X25	1"	39.5	29
32X32	1 1/4"	48.5	33
40X40	1 1/2"	55	37
50X50	2"	67	42
65X65	2 1/2"	84	49
80X80	3"	98	54
100X100	4"	124.5	64

Model: Z90FF
90 Degree Elbow



DN		Dimensions (mm)	
DN	R	D	H
8X8	1/4"	18	19
10X10	3/8"	21	23
15X15	1/2"	26.5	27
20X20	3/4"	32	32
25X25	1"	39.5	37
32X32	1 1/4"	48.5	43
40X40	1 1/2"	55	48
50X50	2"	67	56
65X65	2 1/2"	84	69
80X80	3"	98	78
100X100	4"	124.5	94

Model: ZTFFF
Tee



DN		Dimensions (mm)	
Inch	RcXRc1	D	A
8X8	1/4"x1/4"	18	19
10X10	3/8"x3/8"	21	23
15X15	1/2"x1/2"	26.5	27
20X20	3/4"x3/4"	32	32
25X25	1"x1"	39.5	37
32X32	1 1/4"x1 1/4"	48.5	43
40X40	1 1/2"x1 1/2"	55	48
50X50	2"x2"	67	56
65X65	2 1/2"x2 1/2"	84	69
80X80	3"x3"	98	78
100X100	4"x4"	124.5	94

NU Stainless Steel Pipe Fittings

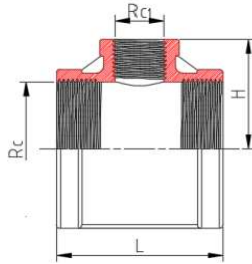
*Standard: ISO4144

*Stainless Steel Grade: SS316

*Threads: ISO7-1

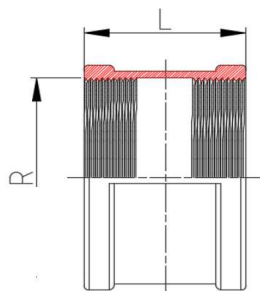
*Working Pressure: Max. 20 Bar

Model: ZTFFF
Reducing Tee



DN		Dimensions (mm)	
Inch	RcXRc1	L	H
20X15	3/4" x1/2"	58	30
25X15	1" x1/2"	64	33
25X20	1"x3/4"	68	35
32X15	1 1/4"x1/2"	68	39
32X20	1 1/4"x3/4"	74	40
32X25	1 1/4"x1"	80	42
40X15	1 1/2"x1/2"	70	42
40X20	1 1/2"x3/4"	76	43
40X25	1 1/2"x1"	82	45
40X32	1 1/2"x1 1/4"	90	48
50X15	2" x1/2"	72	48
50X20	2" x3/4"	80	49
50X25	2" x1"	86	51
50X32	2" x1 1/4"	94	53
50X40	2" x1 1/2"	102	54
65X32	2 1/2" x1 1/4"	104	61
65X40	2 1/2" x1 1/2"	110	62
65X50	2 1/2" x2"	120	65

Model: ZSFF
Socket



DN		Dimensions (mm)	
Inch	R	L	
8X8	1/4"	26	
10X10	3/8"	30	
15X15	1/2"	35	
20X20	3/4"	38	
25X25	1"	43	
32x32	1 1/4"	49	
40X40	1 1/2"	52	
50X50	2"	63	
65X65	2 1/2"	70	
80X80	3"	75	
100X100	4"	85	

NU Stainless Steel Pipe Fittings

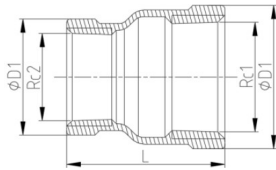
*Standard: ISO4144

*Stainless Steel Grade: SS316

*Threads: ISO7-1

*Working Pressure: Max. 20 Bar

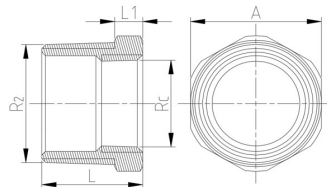
Modl: ZSRF
Reducer



DN	RcXRc1	L
80X50	3"X2"	70
80X65	3"X2 1/2"	70
100X25	4"X1"	85
100X32	4"X1 1/4"	85
100X40	4"X1 1/2"	85
100X50	4"X2"	85
100X65	4"X2 1/2"	85
100X80	4"X3"	85

Inch	DN	
	RcXRc1	Dimensions (mm)
		L
20X15	3/4" x1/2"	38
25X15	1" x1/2"	42
25X20	1" x3/4"	42
32X15	1 1/4"x1/2"	46
32X20	1 1/4"x3/4"	46
32X25	1 1/4"x1"	46
40X15	1 1/2"x1/2"	50
40X20	1 1/2"x3/4"	50
40X25	1 1/2"x1"	50
40X32	1 1/2"x1 1/4"	50
50X15	2" x1/2"	56
50X20	2" x3/4"	56
50X25	2" x1"	56
50X32	2" x1 1/4"	56
50X40	2" x1 1/2"	56
65X15	2 1/2" x1/2"	65
65X20	2 1/2" x3/4"	65
65X25	2 1/2" x1"	65
65X32	2 1/2" x1 1/4"	65
65X40	2 1/2" x1 1/2"	65
65X50	2 1/2" x2"	65
80X25	3"X1"	70
80X32	3"X1 1/4"	70
80X25	3"X1"	70
80X40	3"X1 1/2"	70

Model: BX
Bushing



DN	RcXRc1	L	L1	A
80X40	3"X1 1/2"	42.5	11.5	91
80X50	3"X2"	42.5	11.5	91
80X65	3"X2 1/2"	42.5	11.5	91
100X25	4"X1"	49.5	12.5	117
100X32	4"X1 1/4"	49.5	12.5	117
100X40	4"X1 1/2"	49.5	12.5	117
100X50	4"X2"	49.5	12.5	117
100X65	4"X2 1/2"	49.5	12.5	117
100X80	4"X3"	49.5	12.5	117

Inch	DN		Dimensions (mm)		
	RcXRc1	L	L1	A	
20X15	3/4" x1/2"	24.5	7	28	
25X15	1" x1/2"	27	7.5	35	
25X20	1" x3/4"	27	7.5	35	
32X15	1 1/4"x1/2"	68	8	44	
32X20	1 1/4"x3/4"	29	8	44	
32X25	1 1/4"x1"	29	8	44	
40X15	1 1/2"x1/2"	30	8	50	
40X20	1 1/2"x3/4"	30	8.5	50	
40X25	1 1/2"x1"	30	8.5	50	
40X32	1 1/2"x1 1/4"	30	8.5	50	
50X15	2" x1/2"	34	9	62	
50X20	2" x3/4"	34	9	62	
50X25	2" x1"	34	9	62	
50X32	2" x1 1/4"	34	9	62	
50X40	2" x1 1/2"	34	9	62	
65X15	2 1/2" x1/2"	38.5	10.5	78	
65X20	2 1/2" x3/4"	38.5	10.5	78	
65X25	2 1/2" x1"	38.5	10.5	78	
65X32	2 1/2" x1 1/4"	38.5	10.5	78	
65X40	2 1/2" x1 1/2"	38.5	10.5	78	
65X50	2 1/2" x2"	38.5	10.5	78	
80X25	3"X1"	42.5	11.5	91	
80X32	3"X1 1/4"	42.5	11.5	91	

NU Stainless Steel Pipe Fittings

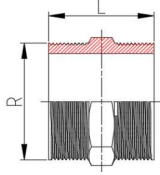
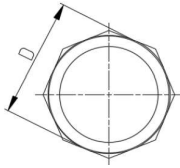
*Standard: ISO4144

*Stainless Steel Grade: SS316

*Threads: ISO7-1

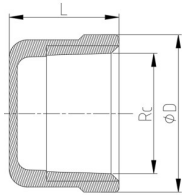
*Working Pressure: Max. 20 Bar

Model: ZSD
Nipple



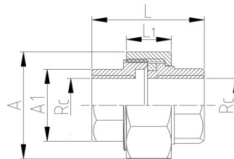
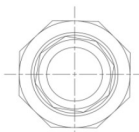
DN		Dimensions (mm)	
Inch	R	L	D
8	1/4"	33	15
10	3/8"	36	18
15	1/2"	41	22
20	3/4"	44	28
25	1"	49	35
32	1 1/4"	53	44
40	1 1/2"	55	50
50	2"	63	62
65	2 1/2"	70	78
80	3"	77	91
100	4"	90	117

Model: ZCF
Cap



DN		Dimensions (mm)	
DN	R	D	L
8	1/4"	18	16.5
10	3/8"	21	17.5
15	1/2"	26.5	21.5
20	3/4"	32	22.5
25	1"	39.5	26.5
32	1 1/4"	48.5	29
40	1 1/2"	55	30
50	2"	67	34
65	2 1/2"	84	39
80	3"	98	42.5
100	4"	124.5	49

Model: Z90FF
Union



DN		Dimensions (mm)			
DN	R	A	A1	L	L1
8X8	1/4"	29	17	33	14
10X10	3/8"	33	21	36	14.5
15X15	1/2"	38	25	39.5	16.5
20X20	3/4"	46	31	42.5	17.5
25X25	1"	54	38	46.5	18.5
32X32	1 1/4"	64	47	53	21
40X40	1 1/2"	71	53	57	23
50X50	2"	85	65	63	25
65X65	2 1/2"	107	81	71	27
80X80	3"	120	95	79	29
100X100	4"	146	121	89	31