

# MEIDE VALVE

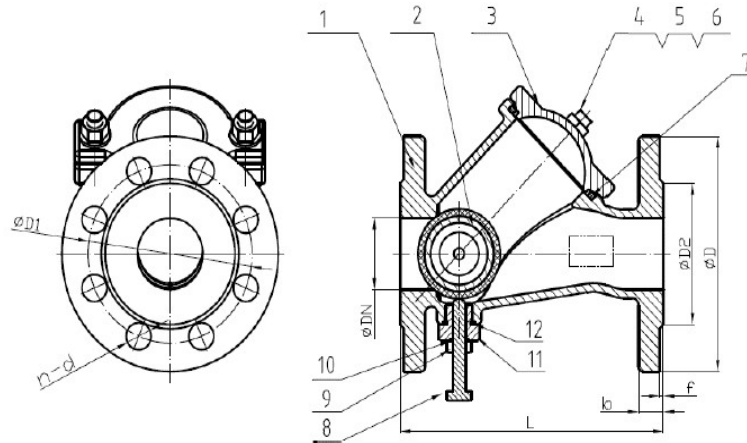


**Model: HQ41XN  
Ball Check Valve**

Standard: EN12334

Flange Specification: EN1092-2 PN16

Working Pressure: PN10/PN16



Part No.	Part	Material
1	Valve Body	Ductile Iron EN-GJS-450-10
2	Ball	NBR + Carbon Steel
3	Cover	Ductile Iron EN-GJS-450-10
4	Bolt	Stainless Steel 304
5	Nut	Stainless Steel 304
6	Flat Washer	Stainless Steel 304
7	O Ring	NBR
8	Bolt	Stainless Steel 316
9	Nut	Stainless Steel 316
10	O Ring	NBR
11	Screw	Stainless Steel 316
12	Ring	NBR

DN		PN	Dimensions (mm)						
mm	inch		L	D	D1	D2	b	f	n-Ød
50	2"	10/16	200	165	125	99	19	3	4-Ø19
65	2-1/2"	10/16	240	185	145	118	19	3	4-Ø19
80	3"	10/16	260	200	160	132	19	3	8-Ø19
100	4"	10/16	300	220	180	156	19	3	8-Ø19
125	5"	10/16	350	250	210	184	19	3	8-Ø19
150	6"	10/16	400	285	240	211	19	3	8-Ø23
200	8"	10	500	340	295	266	20	3	8-Ø23
		16				266			12-Ø23
250	10"	10	600	400	350	319	22	3	12-Ø23
		16			355	319			12-Ø28
300	12"	10	700	460	400	370	24.5	4	12-Ø23
		16			410	370			12-Ø28



**JINAN MEIDE CASTING CO., LTD.**