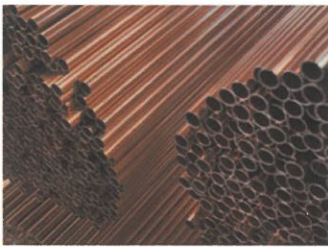


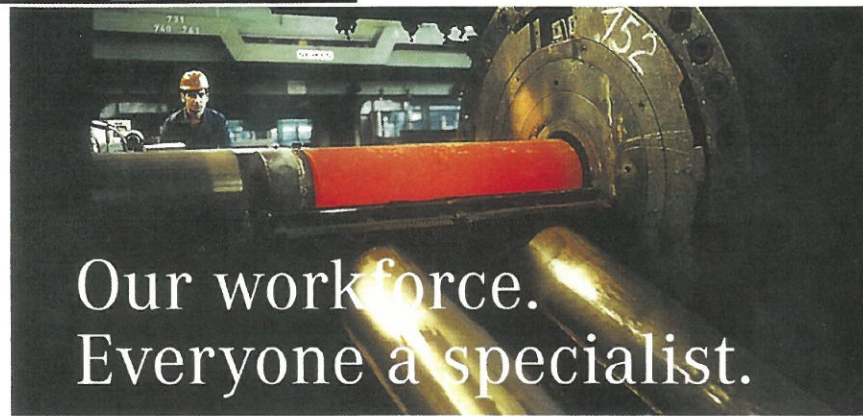
**EAGLE®**



**EAGLE®**

**COPPER TUBE  
TO EUROPEAN  
STANDARD EN1057**

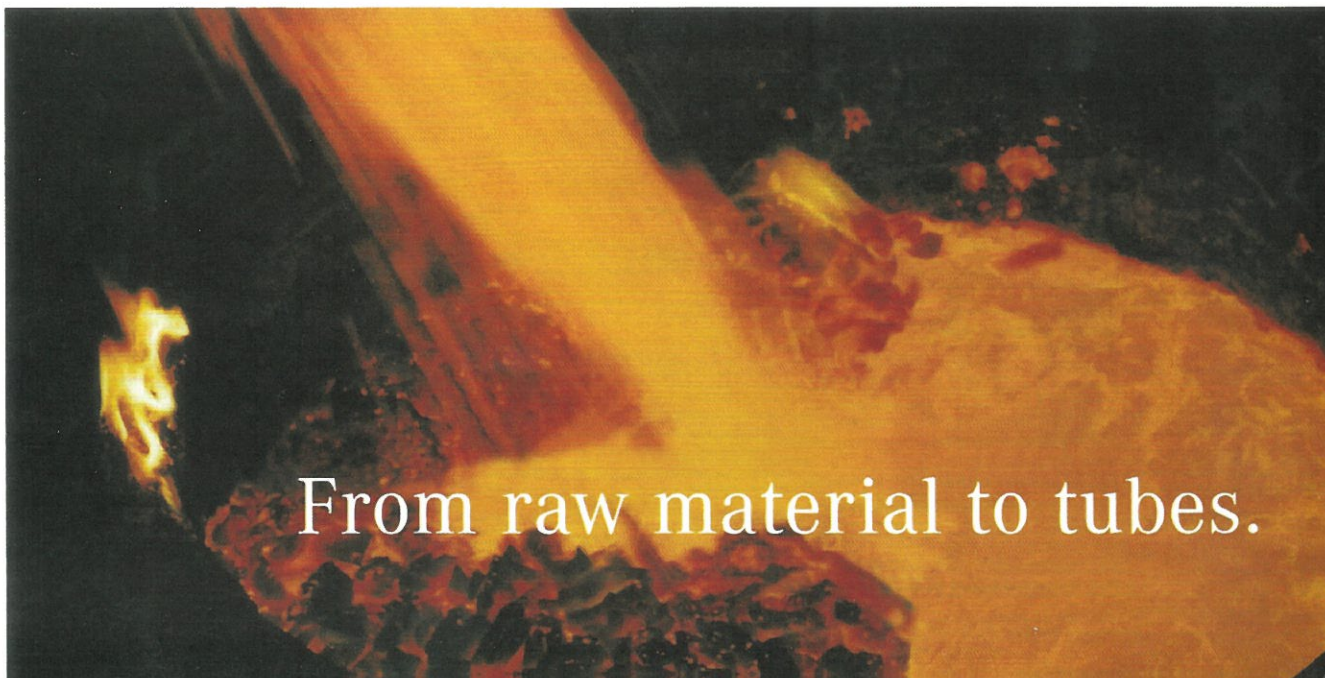
EAGLE®



EAGLE®

COPPER TUBE  
TO EUROPEAN  
STANDARD EN1057

Our workforce.  
Everyone a specialist.



From raw material to tubes.



EAGLE copper tube is made of at least 99.9% pure metallic copper and manufactured to BSEN1057 standards. EAGLE copper tubes are high quality and can be used in all plumbing applications easy. Tubes of size 15mm, 22mm and 28mm fulfill BS EN1057's requirements for R250 half hard tube H, while tubes of size 35mm to 159mm fulfill the requirements for R290 hard tubes.

## EAGLE® COPPER TUBE - TYPE X

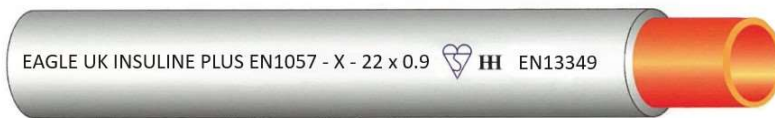
NOMINAL DIAMETER (mm)	NOMINAL THICKNESS (mm)	MAXIMUM WORKING PRESSURES			MASS / LENGTH* (kg / 5.8m)
		ANNEALED	HALF HARD	HARD	
		(kPa)			
15	0.7	4 500	5 800	7 100	1.63
22	0.9	3 900	5 100	6 200	3.09
28	0.9	3 100	4 000	4 800	3.98
35	1.2	3 300	4 200	5 100	6.61
42	1.2	2 700	3 500	4 300	7.98
54	1.2	2 100	2 700	3 300	10.33
66.7	1.2	1 700	2 000	2 700	12.81
76.1	1.5	1 800	2 400	2 900	18.24
108	1.5	1 300	1 700	2 000	26.04
133	1.5	1 000	1 400	1 700	32.15
159	2.0	1 200	1 500	1 800	51.18

## EAGLE® COPPER TUBE - TYPE Y

NOMINAL DIAMETER (mm)	NOMINAL THICKNESS (mm)	MAXIMUM WORKING PRESSURES			MASS / LENGTH* (kg / 5.8m)
		ANNEALED	HALF HARD	HARD	
		(kPa)			
15	1.0	6 700	8 700	10 400	2.28
22	1.2	5 300	6 900	8 400	4.07
28	1.2	4 200	5 500	6 500	5.24
35	1.5	4 100	5 400	6 500	8.19
42	1.5	3 400	4 500	5 400	9.90
54	2.0	3 600	4 700	5 600	16.95
66.7	2.0	2 800	3 700	4 500	21.09
76.1	2.0	2 500	3 300	3 900	24.15
108	2.5	2 200	2 900	3 400	42.99



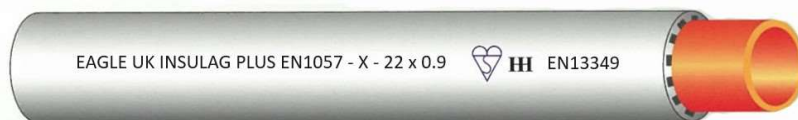
**INSULINE PLUS** has a tough, thin solid and space-saving cover. This moisture resistant cover upgrades the product's suitability for cold water applications where the tube may be concealed. This tube is also suitable for gas line installations. The PE coating is manufactured in accordance with BS3412 / EN13349, a specification for covered copper tube. Size available from 15mm to 76.1mm inclusive



**EAGLE®**

COPPER TUBE  
TO EUROPEAN  
STANDARD  
EN1057

**INSULAG PLUS** has an internally profiled cover and uses the air trapped within the profile to form a thermal barrier. It is suitable for both hot and cold water applications, reducing heat loss and offering increased protection against possible pipe freezing. The PE coating is manufactured in accordance with BS3412 / EN13349, a specification for covered copper tube. Size available from 15mm to 54mm inclusive.





LOW SMOKE ZERO HALOGEN (LSOH) is a material that emit limited smoke and no halogens when exposed to high sources of heat (i.e. flame).

These types of materials are typically used in poorly ventilated areas.

LSOH is becoming very popular and in some cases a requirement in instances where the protection of people and equipment from toxic and corrosive gases is critical.

TUNG SHING HARDWARE COMPANY LIMITED  
FLAT E 20/F CDW BUILDING, 388 CASTLE PEAK ROAD HONG KONG

THIS TEST REPORT IS TO SUPERSEDE TEST REPORT NO.: AJD290266, DATE: SEP.29, 2009  
The following sample(s) was / were submitted and identified on behalf of the client as:

**Product Description:** PE PLASTIC COATING FOR EAGLE COPPER TUBE

**Addition information of the sample:**  
EAGLE UK INSULINE PLUS EN 1057-X- LSOH NOMINAL SIZE  
EAGLE UK INSULAG PLUS EN 1057-X- LSOH NOMINAL SIZE

**Test Requested:**

- To determine the Smoke density of the sample "PE sheath of copper tube" when it is subjected to the conditions of test specified in EN 61034-1:2005 and EN 61034-2:2005.
- To determine the degree of acidity of gases for materials by measuring pH and conductivity of the sample "PE sheath of copper tube" when it is subjected to the conditions of test specified in EN 50267-2-2:1998

**Test Results:** --- See attached sheet ---

**Test Period:**

Sample Receiving Date : SEP.18, 2009  
Test Performing Date : SEP.18, 2009 TO SEP.24, 2009  
Further Information Receiving Date : SEP.29,2009

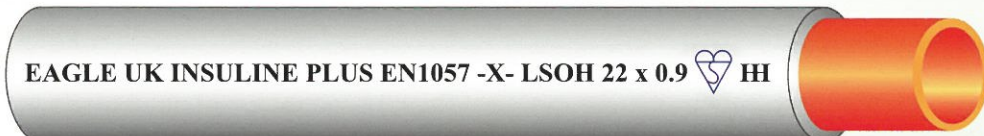
Signed for and on behalf of  
SGS-CSTC Co., Ltd.

Winson Wang  
Supervisor

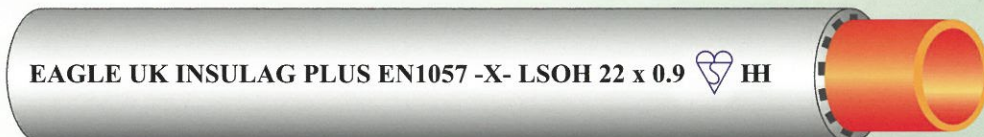


SGS  
1511 King's Road, Tseung Kwan O, New Territories, Hong Kong  
Tel: (852) 2412 1000 Fax: (852) 2412 1001  
E-mail: info@sgs.com.hk  
Member of the SGS Group (SGS S.A.)

EAGLE COPPER TUBE - LSOH PE sheath comply to EN61034-1, EN61034-2, EN50267-2-1 & EN50267-2-2

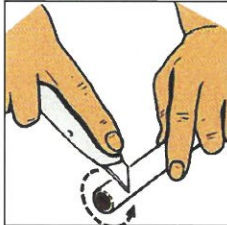


INSULINE PLUS - LSOH PE sheath is a tough, thin solid and spacing saving cover. This moisture resistant cover upgrades the product's suitability for cold water applications where the tube may be concealed. This copper tube complies to EN 1057 and also suitable for gas line installations. Size available from 15mm to 76.1mm inclusive.

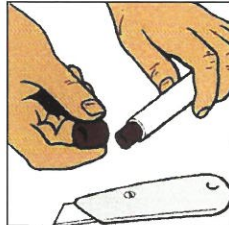


INSULAG PLUS - LSOH PE sheath is an internally profiled cover and uses the air trapped within the profile to form a thermal barrier. It is suitable for both hot and cold water applications, reducing heat loss and offering increased protection against possible pipe freezing. This copper tube complies to EN1057. Size available from 15mm to 54mm inclusive.

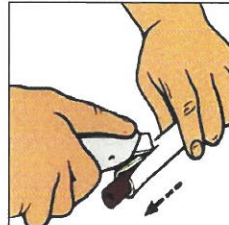
# INSTALLATION GUIDE PLASTIC COATED COPPER TUBE



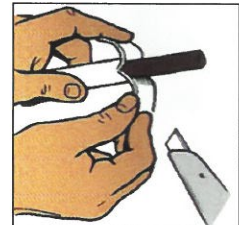
1. Make circular incision in plastic cover.



2. Remove the cut plastic from the end of the tube.



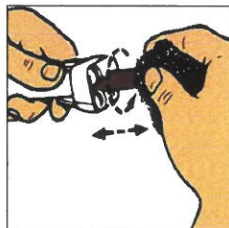
3. Make the incision in plastic along tube.



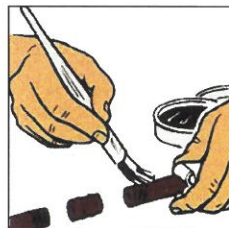
4. Peel back the plastic cover carefully.



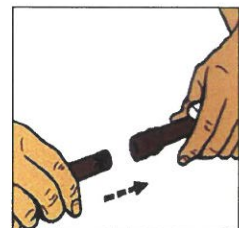
5. Secure the spliced plastic cover with



6. Clean tube and fitting with a suitable abrasive pad.



7. Apply Flur.



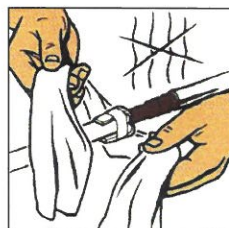
8. Connect tube and fitting.



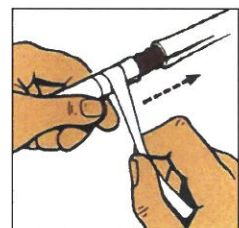
9. Wrap exposed plastic with a damp cloth.



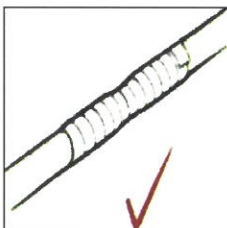
10. Heat with blow lamp.



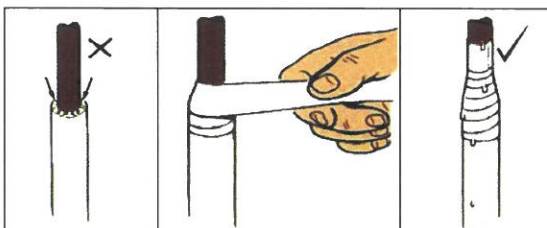
11. When cooled remove damp cloth and re-position plastic.



12. Secure with tape.



13. The finished joint.



14. Exposed ends should be sealed with tape.



Mueller Europe Ltd  
T/A Yorkshire Copper Tube  
East Lancashire Road  
Kirkby  
Liverpool  
L33 7TU  
United Kingdom



東成五金有限公司  
TUNG SHING HARDWARE CO., LTD.

九龍油塘灣四山街14號地庫  
14 Sze Shan Street, Basement, Yau Tong Bay, Kowloon, Hong Kong.  
Office: Tel: (852) 2626 9983 Fax : (852) 2626 9357  
E-mail: tscold@tscold.com.hk

*Tung Shing reserves the right to change the content of this brochure without prior notice. It is the user's concern to determine the quality, standard, and fitness of the products for a particular application*