




**MEIDE VALVE** BS Standard  
Manufacturing Quality Products Since 1962



**JINAN MEIDE CASTING CO., LTD.**





# A


## Company Profile

Jinan Meide Casting Co., Ltd., since 1962.  
More than 50 years of experience in providing solutions for piping systems.








Over the years, the company has been supplying full range of high quality products in strict accordance with the rigorous requirement of the piping systems to its customers all over the world. Meide people understand profoundly the importance of safety and reliability, and its significance for the safety guarantee of the piping systems. It has always been the constant pursuit of the company to provide for its customers professional solutions and high quality products.

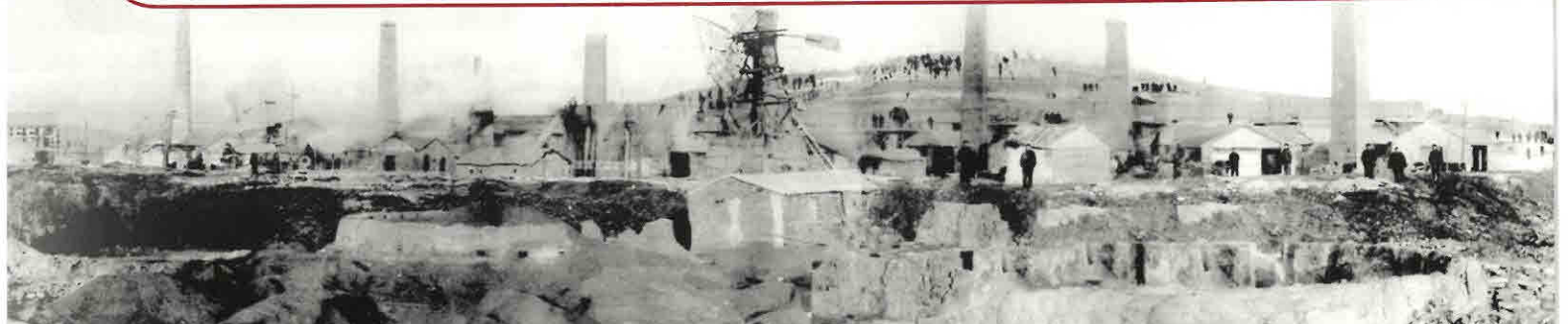
Production and quality control are organized strictly according to ISO 9001 and stricter even than the highest industry specifications. With more than 50 years of foundry experience, we are proud to promise our customers that Jinan Meide has special advantages compared with other valve manufacturers, especially in terms of material and product reliability.

In the year of 2003 a new R&D center equipped with the most advanced facilities of the industry has been established and the company's capability for improvement of energy conservation, environmental protection, productivity and efficiency got further enhanced. More than 800 sets of patterns are renewed or developed every month. All this makes sure Jinan Meide's leadership in the industry.



## COMPANY HISTORY

|   |             |                                     |  |
|---|-------------|-------------------------------------|--|
|   | 1960        |                                     |  |
|   | 1961        |                                     |  |
|    | <b>1962</b> | Business Started from Grey Iron Pot |  |
|   | 1963        |                                     |  |
|   | 1964        |                                     |  |
|   | 1965        |                                     |  |
|   | 1966        |                                     |  |
|   | 1967        |                                     |  |
|   | 1968        |                                     |  |
|    | <b>1970</b> | Malleable Iron Pipe Fittings        |  |
|   | 1971        |                                     |  |
|   | 1972        |                                     |  |
|   | 1973        |                                     |  |
|   | 1974        |                                     |  |
|   | 1975        |                                     |  |
|   | <b>1976</b> | Malleable Iron Pipeclamp Fittings   |  |
|   | 1977        |                                     |  |
|   | 1978        |                                     |  |
|   | 1979        |                                     |  |
|   | 1980        |                                     |  |
|  | <b>1982</b> | Ductile Iron Pipe Fittings          |  |
|   | 1983        |                                     |  |
|   | 1984        |                                     |  |
|   | 1985        |                                     |  |
|   | 1986        |                                     |  |
|   | <b>1987</b> | Export, Main Market: Southeast Asia |  |
|  | 1988        |                                     |  |
|   | <b>1989</b> | Cast Iron Fittings                  |  |
|   |             |                                     | <b>1990</b> Pipe Hangers and Brackets  |
|   |             |                                     | 1991   |
|   |             |                                     | 1992   |
|   |             |                                     | <b>1993</b> Self Export, Developed US and European Market                          |
|   |             |                                     | 1994   |
|   |             |                                     | 1995   |
|   |             |                                     | 1996   |
|   |             |                                     | <b>1997</b> Steel Pipe Nipples Red Brass Pipe Nipples                              |
|   |             |                                     | 1998   |
|   |             |                                     | 1999   |
|   |             |                                     | <b>2000</b> Ductile Iron Grooved Fittings Bronze Fittings, Valves                  |
|   |             |                                     | 2001   |
|   |             |                                     | 2002   |
|   |             |                                     | 2003   |
|   |             |                                     | 2004   |
|   |             |                                     | 2005   |
|   |             |                                     | 2006   |
|   |             |                                     | <b>2007</b> Electric Power Fittings  |
|   |             |                                     | 2008   |
|   |             |                                     | 2009   |
|   |             |                                     | 2010   |
|   |             |                                     | <b>2011</b> Hydraulic Control Valves   |
|   |             |                                     |  |
|   |             |                                     | <b>2012</b> Extra-heavy Brass Pipe Nipples   |
|   |             |                                     |  |
|   |             |                                     | <b>2013</b> Steel Pipe Development   |



# B

## State of the Art Equipment

Good equipment is the guarantee for good quality. Jinan Meide's 6 factories are all equipped with the most advanced facilities and equipments in the industry. The main production facilities include: Sinto automatic molding line, Tokyu automatic molding line, Chinese 416 automatic vertical molding line, automatic molding sand mixers, cupola furnaces, electric furnaces, water-cooled longevous cupola furnaces, CNC vertical machining centers, CNC machines, NC vertical lathes, radial drills, Jinan Meide proprietary automatic machines, automatic epoxy powder coating line, electrodeposition paint coating line, automatic box sealing line, stereoscopic warehouse and so on.





