

EAGLE[®] COPPER SOLDER RING CAPILLARY FITTINGS

TO EUROPEAN STANDARD BS EN 1254-1

EAGLE[®] 錫圈配件

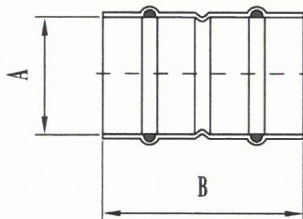
SOLDER RING CAPILLARY FITTINGS comply with BS EN1254-1



錫圈配件 符合BS EN1254-1標準

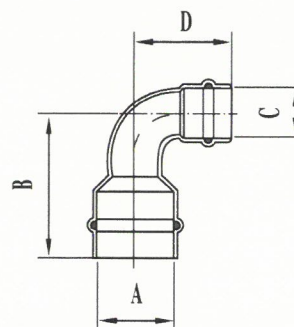
EG.1 Straight Coupling C×C 錫杰

Code No.	Nominal Size	A	B
EG.1.1	15mm	15	29
EG.1.2	22mm	22	40
EG.1.3	28mm	28	46
EG.1.4	35mm	35	56.5
EG.1.5	42mm	42	66
EG.1.6	54mm	54	76



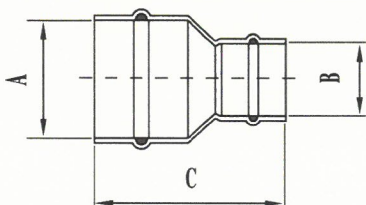
EG.12R 90° Reducing Elbow C×C 錫刁曲

Code No.	Nominal Size	A	B1	B2	C
EG.12R.21	22X15mm	22	34.5	15	30.5



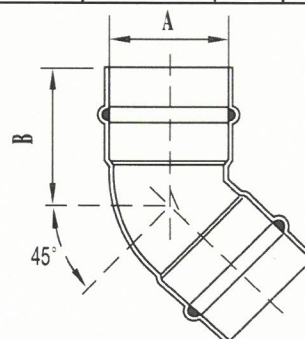
EG.1R Reducing Coupling C×C 錫刁士

Code No.	Nominal Size	A	B	C
EG.1R.21	22X15mm	22	15	42
EG.1R.31	28X15mm	28	15	45
EG.1R.32	28X22mm	28	22	47
EG.1R.42	35X22mm	35	22	57
EG.1R.43	35X28mm	35	28	58
EG.1R.53	42X28mm	42	28	66
EG.1R.54	42X35mm	42	35	67
EG.1R.64	54X35mm	54	35	78
EG.1R.65	54X42mm	54	42	79



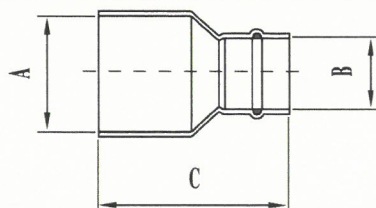
EG.21 45° Elbow C×C 45° 錫曲

Code No.	Nominal Size	A	B
EG.21.1	15mm	15	23.5
EG.21.2	22mm	22	32.3
EG.21.3	28mm	28	39.5
EG.21.4	35mm	35	44.5
EG.21.5	42mm	42	42.5
EG.21.6	54mm	54	50



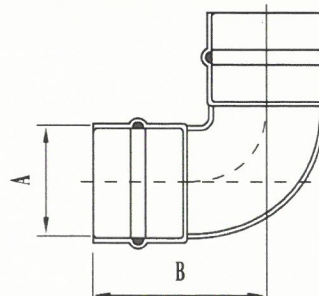
EG.6 Fitting Reducer C×C 錫單刁士

Code No.	Nominal Size	A	B	C
EG.6.21	22X15mm	22	15	35.5
EG.6.31	28X15mm	28	15	44.5
EG.6.32	28X22mm	28	22	45.5
EG.6.42	35X22mm	35	22	56.5
EG.6.43	35X28mm	35	28	58
EG.6.53	42X28mm	42	28	64
EG.6.54	42X35mm	42	35	68
EG.6.64	54X35mm	54	35	78
EG.6.65	54X42mm	54	42	80



EG.12 90° Elbow C×C 正錫曲

Code No.	Nominal Size	A	B
EG.12.1	15mm	15	21.5
EG.12.2	22mm	22	32.5
EG.12.3	28mm	28	39.1
EG.12.4	35mm	35	50
EG.12.5	42mm	42	55
EG.12.6	54mm	54	65



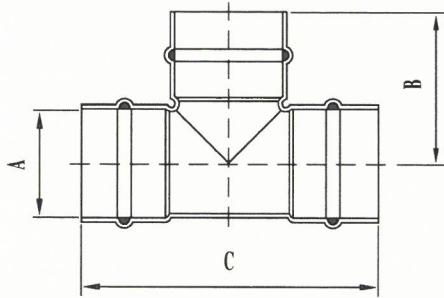
SOLDER RING CAPILLARY FITTINGS comply with BS EN1254-1



錫圈配件 符合BS EN1254-1標準

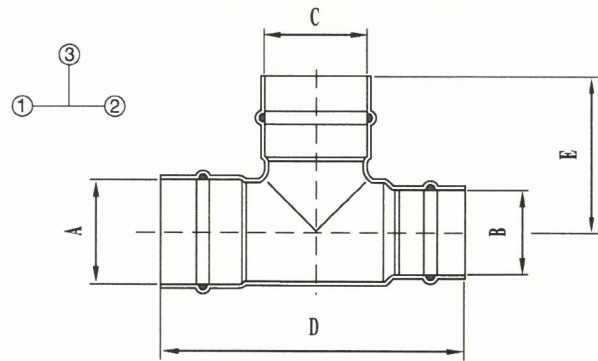
EG.24 Equal Tee C×C×C 正錫叉

Code No.	Nominal Size	A	B	C
EG.24.1	15mm	15	24.3	45
EG.24.2	22mm	22	33	62
EG.24.3	28mm	28	40.3	76.5
EG.24.4	35mm	35	48.4	93
EG.24.5	42mm	42	55	108
EG.24.6	54mm	54	66	132



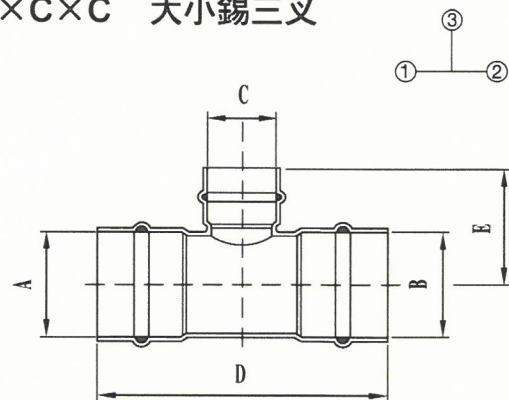
EG.26 Reduced One End Tee C×C×C 大豬嘴錫叉

Code No.	Nominal Size	A	B	C	D	E
EG.26.212	22X15X22mm	22	15	22	65	31
EG.26.313	28X15X28mm	28	15	28	77.5	39.6
EG.26.323	28X22X28mm	28	22	28	81.5	39.6



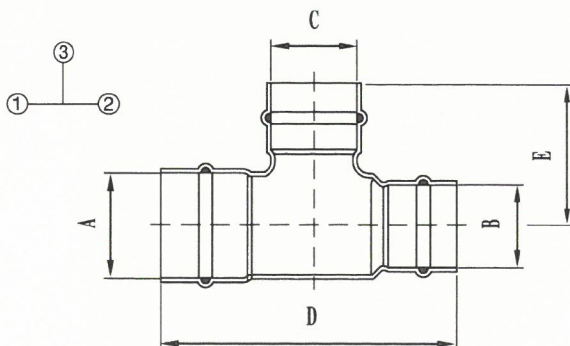
EG.25 Reduced Branch Tee C×C×C 大小錫三叉

Code No.	Nominal Size	A	B	C	D	E
EG.25.221	22X22X15mm	22	22	15	57	27
EG.25.331	28X28X15mm	28	28	15	60	29
EG.25.332	28X28X22mm	28	28	22	70	37
EG.25.441	35X35X15mm	35	35	15	74	34
EG.25.442	35X35X22mm	35	35	22	80	39
EG.25.443	35X35X28mm	35	35	28	85	42
EG.25.551	42X42X15mm	42	42	15	81	37
EG.25.552	42X42X22mm	42	42	22	87	42
EG.25.553	42X42X28mm	42	42	28	93	45
EG.25.554	42X42X35mm	42	42	35	102	50
EG.25.662	54X54X22mm	54	54	22	100	47
EG.25.663	54X54X28mm	54	54	28	106	52
EG.25.664	54X54X35mm	54	54	35	110	57
EG.25.665	54X54X42mm	54	54	42	119	62



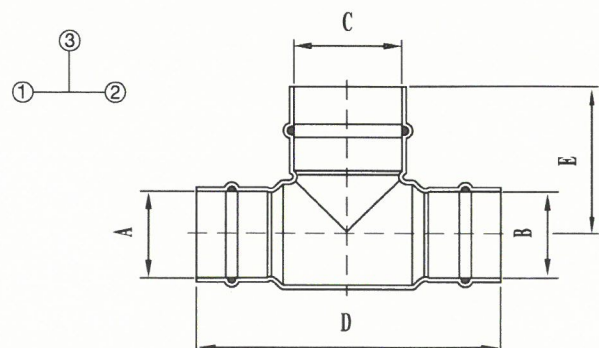
EG.27 Reduced End & Branch Tee C×C×C 小豬嘴錫叉

Code No.	Nominal Size	A	B	C	D	E
EG.27.211	22X15X15mm	22	15	15	60	26
EG.27.322	28X22X22mm	28	22	22	72.5	35.8



EG.28 Two Reduced End Tee C×C×C 錫大肚叉

Code No.	Nominal Size	A	B	C	D	E
EG.28.112	15X15X22mm	15	15	22	56.5	28
EG.28.223	22X22X28mm	22	22	28	70.5	41.5



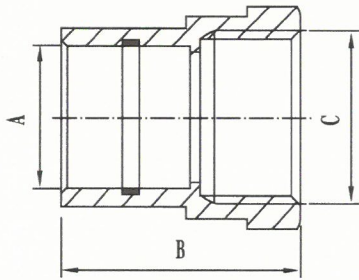
SOLDER RING CAPILLARY FITTINGS comply with BS EN1254-1



錫圈配件 符合BS EN1254-1標準

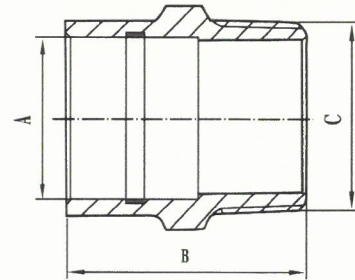
EG.2 Straight Female Connector C×FI 內牙錫嘴

Code No.	Nominal Size	A	B	C
EG.2.1	15mmX1/2"	15	29	G1/2
EG.2.2	15mmX3/4"	22	35.5	G3/4
EG.2.3	28mmX1"	28	41	G1/2



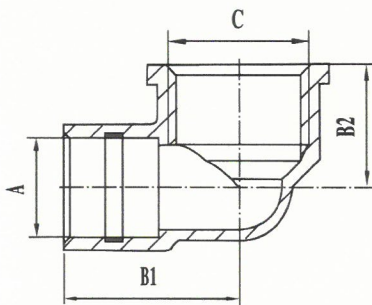
EG.3 Straight Male Connector C×MI 外牙錫嘴

Code No.	Nominal Size	A	B	C
EG.3.1	15mmX1/2"	15	27.5	R1/2
EG.3.2	15mmX3/4"	22	34.5	R3/4
EG.3.3	28mmX1"	28	40	R1
EG.3.4	35mmX1.1/4"	35	47.5	R1.1/4
EG.3.5	42mmX1.1/2"	42	51.5	R1.1/2
EG.3.6	54mmX2"	54	63	R2



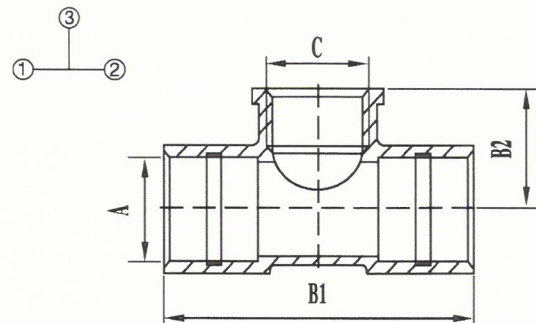
EG.14 90° Female Elbow C×FI 內牙錫曲

Code No.	Nominal Size	A	B1	B2	C
EG.14.1	15mmX1/2"	15	26	18.5	G1/2
EG.14.21	22mmX1/2"	22	31.3	24	G1/2
EG.14.2	22mmX3/4"	22	34	22.5	G3/4



EG.30 Centre Female Tee C×C×FI 中牙錫叉

Code No.	Nominal Size	A	B1	B2	C
EG.30.1	15mmX15mmX1/2"	15	52	21.5	G1/2
EG.30.2	22mmX22mmX3/4"	22	68	26.5	G3/4



東成五金有限公司
TUNG SHING HARDWARE CO., LTD.

貨倉：九龍油塘灣四山街 14 號大益貨倉工業大廈地庫

Warehouse: 14 Sze Shan Street, Basement, Yau Tong Bay, Kowloon, Hong Kong.

寫字樓：九龍觀塘成業街 16 號怡生工業中心 C 座 11 樓

Office: Block C, 11/F, East Sun Industrial Building, 16 Shing Yip Street, Kwun Tong, Kowloon, Hong Kong.

Office: Tel (852) 2626 9983 Fax: (852) 2626 9357

E-mail: tscold@tscold.com.hk